



Smarter
Location
Intelligence

Case Study Nelson & Tasman Councils

TOP OF THE SOUTH MAPS - EXTERNAL WEB VIEWER

Nelson City Council (NCC) and Tasman District Council (TDC) engaged Geographic Business Solutions (GBS) Ltd in October 2010 to develop an external - public facing web mapping portal. The 'Top of the South Map Viewer' has been operational since then at <http://www.topofthesouthmaps.co.nz/>

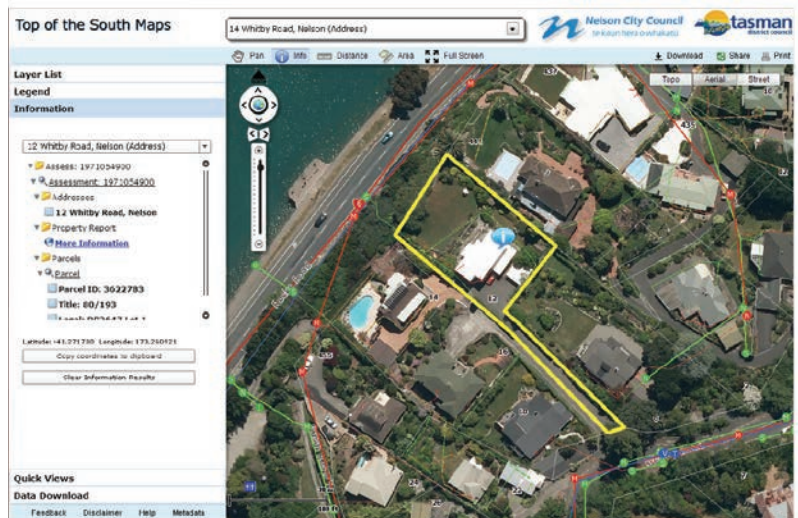


NCC and TDC have since engaged GBS to enhance the existing Top of the South Viewer to include additional functionality in 2011, for the version 2.0 release and in 2013, for the version 3.0 release.



PROJECT OBJECTIVES

- Each phase has enhanced existing functionality and added new features
- Established a shared property process to enhance the returned property information
- Incorporated the NCS property tree tool
- Enhanced data management procedures
- Performance testing
- Upgrading to ArcGIS Server 10.1



PROJECT DELIVERABLES

- A regional map viewer displaying NCC and TDC property data to the public
- Enhancements to existing tools
- Development of new functionality



PROJECT SUCCESS

The Top of the South Map Viewer has been operational since 2010. There have been two upgrades since then to increase the functionality and usability. Feedback from users about the viewer is extremely positive and the clients are very happy with the uptake of this solution by the public.

TECHNICAL BUILD INFORMATION

This project is based on the ESRI Flex API and is part of the Council GIS Consortium (a group of Councils working together to develop web mapping functionality based on the ESRI Flex API).



Geographic Business Solutions

For more information contact
P: +64 9 570 3875 or info@gsb.co.nz
www.gsb.co.nz